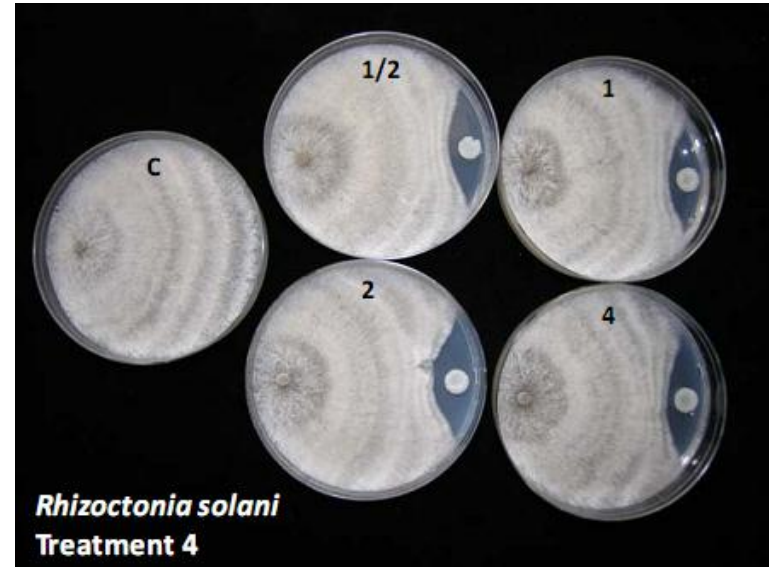
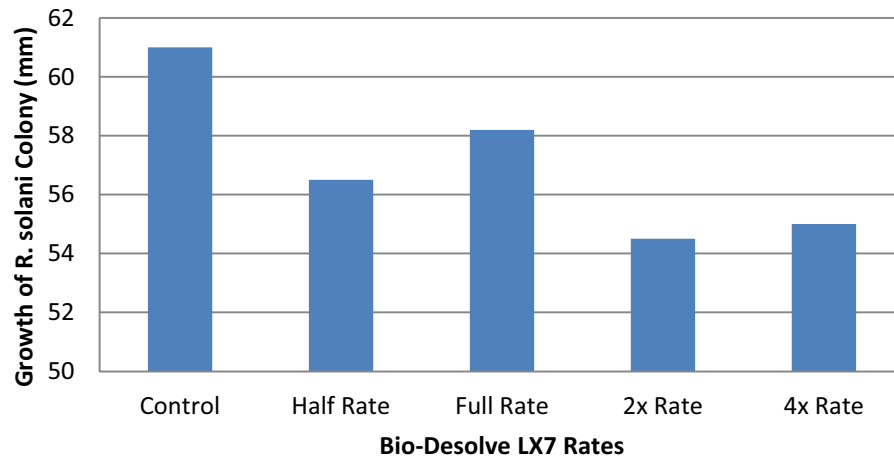


University of Guelph Tests – February, 2010

Growth of *Rhizoctonia solani* at 144 hours



The control dish on the left shows complete disease, spreading from the plug on the left.

In the 4 plates on the right, the disease has been stopped by the plug of Bio-Desolve LX7 placed at the right of the dish.

Growth of *Fusarium graminearum* at 240 hours

